

SYNQ DLP-6: PL-2303 DRIVERS FOR USB/RS485-CONNECTION

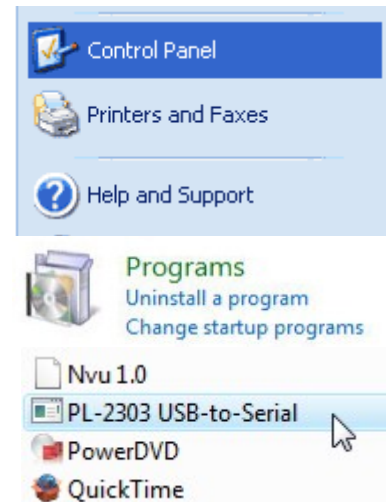
OBJECT:

In some cases installing the drivers in Windows Vista using the file "PL-2303 DRIVER INSTALLER.EXE" doesn't work: The drivers are not properly installed. Below you will find a workaround to install the drivers directly by windows.

If you did not install the drivers yet using the file "PL-2303 DRIVER INSTALLER.EXE" → proceed immediately to "INSTALLING THE DRIVERS USING WINDOWS INSTALL PROCEDURE" on the next page!

REMOVING EXISTING DRIVER INSTALLER PROGRAM:

- Press the "Windows start" button
- Choose the "Control Panel" button
- Choose the "Uninstall a program" button
- Right-click the program "PL-2303 USB-to-Serial" (name can be a little different but it will always include "PL-2303" and delete it.



→ The Driver installer program is removed from your system: now proceed with the next step → removing the current PL-2303 driver.

REMOVING EXISTING DRIVER:

- Connect the DLP-6 to your PC and turn it on (important)
- Press the "Windows start" button
- Choose the "Control Panel" button
- Choose the "Hardware and Sound" button
- Choose the "Device Manager" button
- A list of devices on your PC appears
→ look for "Ports (COM&LPT)" and click it.
- You will see the driver "Prolific USB-to-Serial Comm Port (COM..)"
→ right-click on the driver and choose "Uninstall"
- **Important:** Don't forget to tick "Delete the driver software for the device" otherwise it will be installed automatically the next time you connect the DLP-6! → Press the OK button.



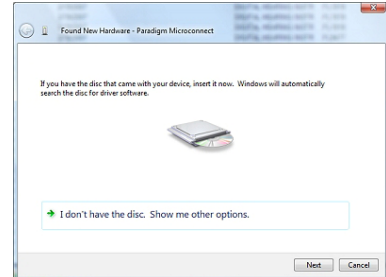
→ The drivers are removed from your system: disconnect the DLP-6 from the PC and re-start Windows.

INSTALLING THE DRIVERS USING WINDOWS INSTALL PROCEDURE

- Copy the attached files "ser2pl.inf" and "ser2pl.sys" to a directory on your PC.
- Connect the DLP-6 unit to a USB-port of your PC → Windows detects a new device and tries to install the drivers. Windows will ask you if you want to install the drivers.
- Choose "Locate and install driver software" → windows will prompt that it's busy installing the new hardware.



- Choose "I don't have disc. Show me other options"
- Another window opens asking where to look for the drivers → browse to the directory where you copied the 2 files ("ser2pl.inf" and "ser2pl.sys") and click the proceed button
- In some cases Windows will open a window prompting that the drivers are not signed. → ignore this message and continue installing the drivers.



→ Windows continues the installation and will finally tell you that the drivers are installed. Take note of the COM-port that windows assigned to the driver. In most cases this will be COM 3 or COM4.

Re-start Windows → Done!