

TUBELED™

Installation Manual

WWW.BEGLEC.COM

Copyright © 2004 by BEGLEC cva.

Reproduction or publication of the content in any manner, without express permission of the publisher, is prohibited.

Version: 1.1



OPERATION MANUAL

Thank you for buying this JB Systems product. To take full advantage of all possibilities, please read these operating instructions very carefully.

The JB Systems TUBELED™ system contains the following components:

- The 1m long TUBELED™ tubes: to be connected to the controller.
- The TUBELED™ controller: controls the connected led tubes.
- Signal extension cables: 5m or 10m.
- Power extension cables: 5m, 10m or 20m.

This manual only explains installation of the tubes, refer to the controller user manual to know everything about how to use the TUBELED™ system.

FEATURES

- Each TUBELED™ uses 144 high efficiency leds.
- Suitable for outdoor use due to IP44 protection grade
- Up to 4000 tubes can be connected to the controller (not included)
- Direct mains input, no costly extra power supplies needed!
- Extended life span: 50000 – 100000 hours
- Low power consumption (P<12W)
- Solid aluminum holders for wall fixing included
- Perfect for use in: retail stores, commercial displays, architectural lighting, indoor and outdoor decoration, clubs, pubs, mobile DJs, trussing, ...

BEFORE USE

Check the contents:

Check if the carton contains the following items:

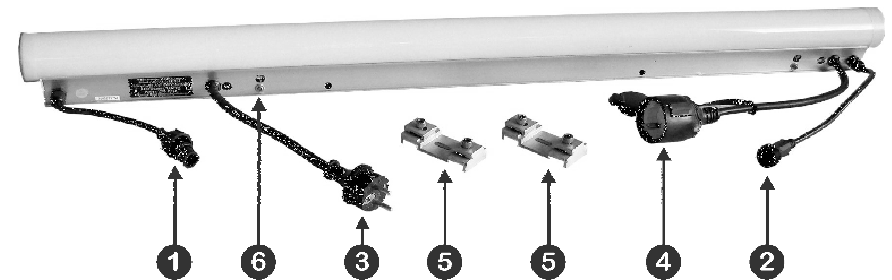
1. TUBELED™
2. two aluminum holders for wall fixing
3. Installation manual

Some important instructions:

- To protect the environment, try to recycle the packing material as much as possible.
- Keep this booklet in a safe place for future consultation. If you sell this unit, be sure to add this installation manual.
- Don't use near strong magnetic fields and objects carrying high voltages.
- The electrical installation should be carried out by qualified personal.
- We strongly suggest NOT opening the unit, there are no user serviceable parts inside.

- In the event of serious operating problems, stop using the unit and contact your dealer immediately.

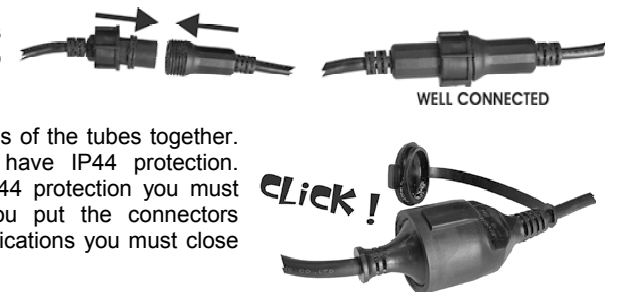
DESCRIPTION



1. **TUBELED SIGNAL INPUT:** low voltage signal input to be connected with the signal output of the previous tube or with the signal output cable from the controller. Extra 5m or 10m signal cable extensions are optionally available.
2. **TUBELED SIGNAL OUTPUT:** low voltage signal output to be connected with the signal input of the next tube. If there's no further tube to be connected, you must seal this connector against humidity if the tubes are used in outdoor applications. Extra 5m or 10m signal cable extensions are optionally available.
3. **MAINS INPUT CABLE:** To be connected with the mains output cable of the previous tube or with any mains wall socket.
4. **MAINS OUTPUT CABLE:** To be connected with the mains input cable of the next tube. If there's no further tube to be connected, you must seal this connector against humidity if the tubes are used in outdoor applications.
5. **TUBE HOLDERS:** Needed to fix the tubes easily against a surface.
6. **GROUND CONNECTION:** Use this connection to ground the led tubes properly.

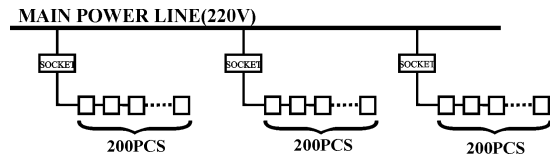
INSTALLING:

- Test each tube independently before installing: just connect each tube separately to the mains voltage (no signal cables connected!) → the tube is OK when it lights up in white color.
- Fix all the tubes properly, using the supplied holders. The tubes are suitable for outdoor applications; however they may NOT be used under water!!!
- Connect the signal cables of all tubes together. Make sure to fasten the plastic ring well.
- Connect the mains cables of the tubes together. The mains connectors have IP44 protection. However to have full IP44 protection you must hear a "click" when you put the connectors together! In outdoor applications you must close



the last female connector with the protection cap and seal it with silicones.

Important: You can put maximum 200 tubes to a 16A wall socket.



- Connect the signal input cable of the first tube to the signal output connector of the TUBELED™ controller. Eventually use the optional 5m or 10m extension cables.
- Connect the mains cable of the first tube to the wall socket.
- When used outdoors you must use the special IP44 power extension cables when needed. Don't use normal power extension cables outdoors!!!
- Switch the controller on and follow the “first time setup” procedure in the user manual supplied with the controller.
- Done!

SPECIFICATIONS

Mains Input:	220V ~ 240V/50Hz
Power consumption:	12Watt
Protection grade:	IP44
Number of LEDs:	144 pcs (48 red, 48 green, 48 blue)
Life span of LEDs:	50000 ~ 100000 hours
Size:	1000 x 50 x 75mm
Weight:	1.8kg