

LS-RGB-DMX CONTROL



ENGLISH Operation Manual



Version: 1.0



If the supply cord is damaged, it must be replaced by the manufacturer, its service agent or similarly qualified persons in order to avoid a hazard.



Read the manual

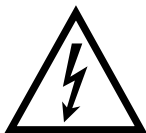


IP44

IP44



This symbol indicating separate collection for electrical and electronic equipment



Warning!



- To prevent fire or shock hazard, do not expose this appliance to rain or moisture.
- To avoid condensation to be formed inside, allow the unit to adapt to the surrounding temperatures when bringing it into a warm room after transport. Condense sometimes prevents the unit from working at full performance or may even cause damages.
- Don't place metal objects or spill liquid inside the unit. No objects filled with liquids, such as vases, shall be placed on this appliance. Electric shock or malfunction may result. If a foreign object enters the unit, immediately disconnect the mains power.
- No naked flame sources, such as lighted candles, should be placed on the appliance.
- Don't cover any ventilation openings as this may result in overheating.
- Prevent use in dusty environments and clean the unit regularly.
- Keep the unit away from children.
- Inexperienced persons should not operate this device.
- Maximum save ambient temperature is 40. Don't use this unit at higher ambient temperatures.
- Always unplug the unit when it is not used for a longer time or before you start servicing.
- The electrical installation should be carried out by qualified personal only, according to the regulations for electrical and mechanical safety in your country.
- Check that the available voltage is not higher than the one stated on the rear panel of the unit.
- The socket inlet shall remain operable for disconnection from the mains.
- The power cored should always be in perfect condition. Switch the unit immediately off when the power cord is squashed or damaged. It must be replaced by the manufacturer, its service agent or similarly qualified persons in order to avoid a hazard.
- Never let the power-cord come into contact with other cables!
- In order to prevent electric shock, do not open the cover. Apart from the mains fuse there are no user serviceable parts inside.
- In the event of serious operating problems, stop using the appliance and contact your dealer immediately.
- Please use the original packing when the device is to be transported.
- Due to safety reasons it is prohibited to make unauthorized modifications to the unit.

Caution!



To reduce the risk of electric shock, do not remove the top cover. No user-serviceable parts inside. Refer servicing to qualified service personnel only.

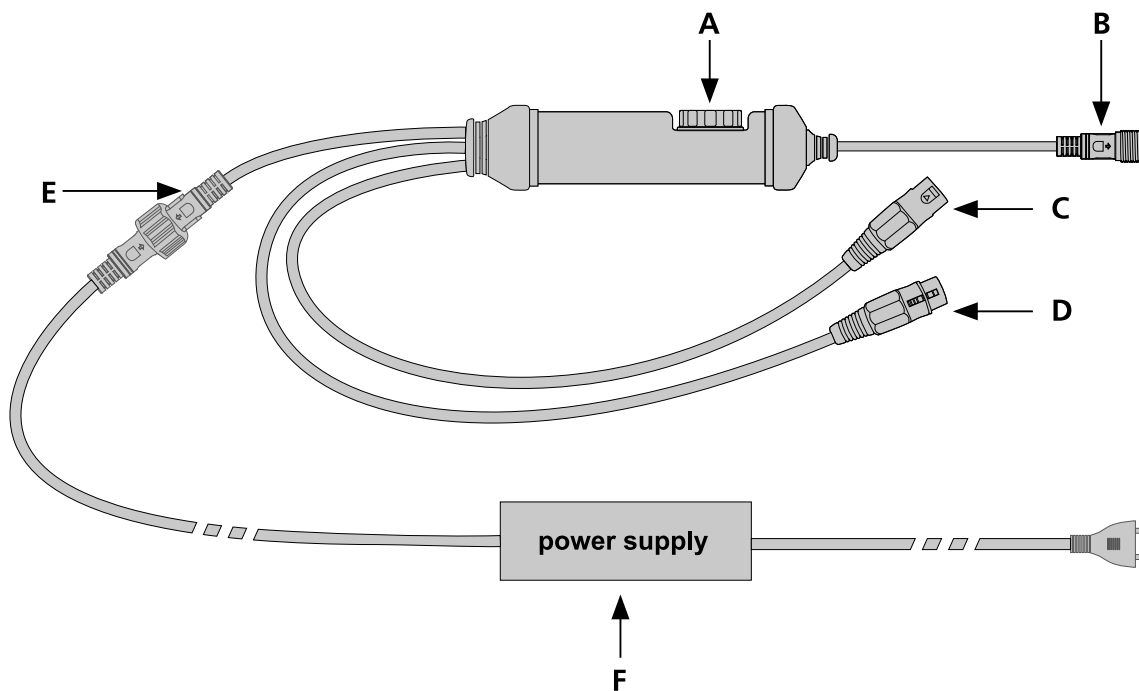
Getting Ready

All products are thoroughly tested at the factory and shipped in perfect condition. If damage has occurred during shipping, or if components are missing, please contact your local dealer immediately.

Inside the Package

- String controller(3A power supply included)
- Operating instructions

Description



- A.** "16-section" turntable & LED indicator
- B.** 5 PIN JY connector
- C.** 3 PIN XLR connector (DMX IN)
- D.** 3 PIN XLR connector (DMX OUT)
- E.** 2 PIN power connector
- F.** Additional Power Supply

Electrical Installation



Important: The electrical installation should be carried out by qualified personal only, according to the regulations for electrical and mechanical safety in your country.

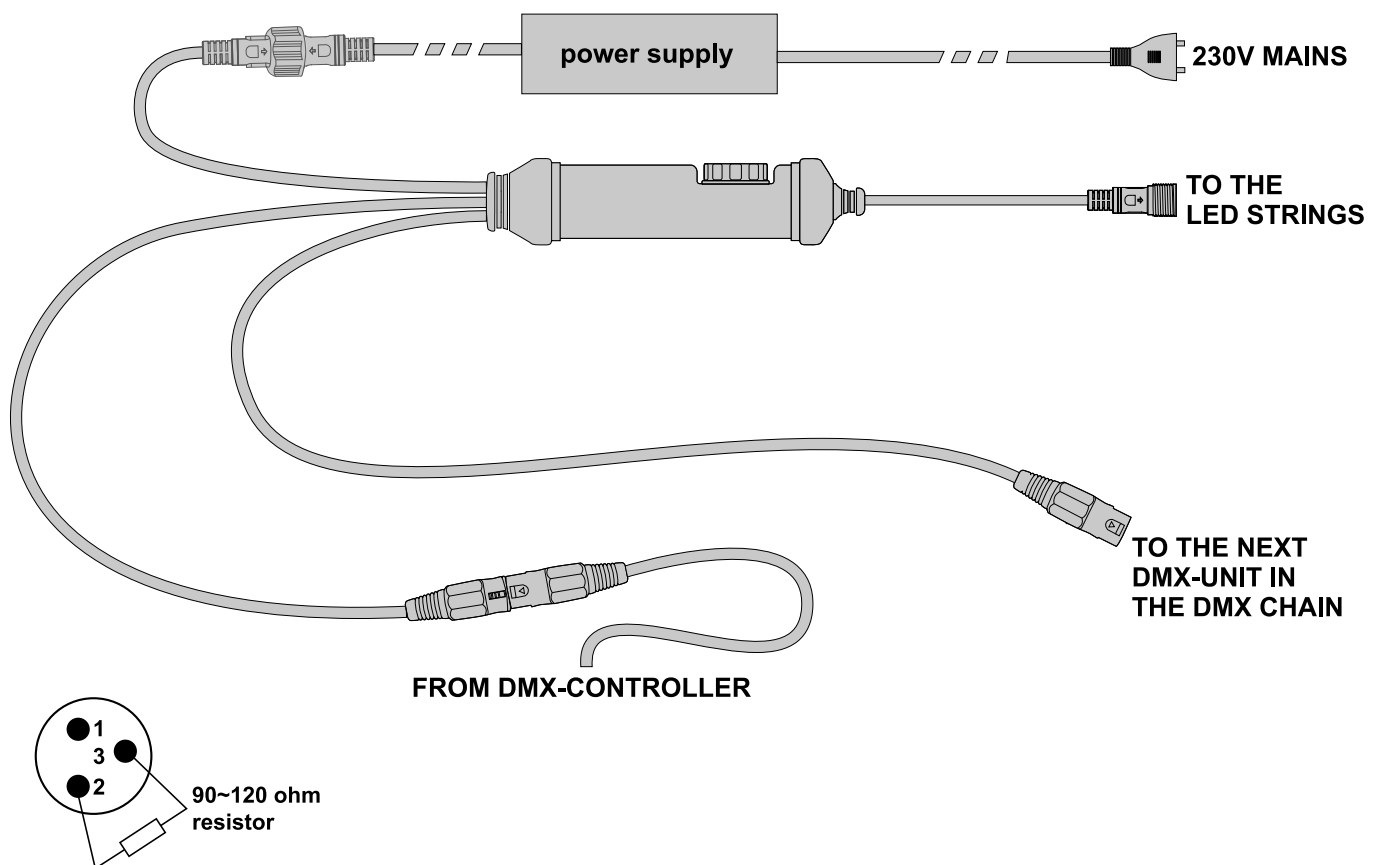
Electrical installation for 1 standalone unit:

- Just insert the mains cable. Switch the "16-section" turntable (A) on the String controller from 1~F (except "0"), the unit starts working immediately in stand-alone mode.

Electrical installation for two or more units in DMX-mode:

- The DMX-protocol is a widely used high speed signal to control intelligent equipment. You need to "daisy chain" your DMX controller and all the connected units with DMX cable.
- To prevent strange behavior of the light effects, due to interferences, you must use a 90Ω to 120Ω terminator at the end of the chain. Never use Y-splitter cables, this simply won't work!
- Make sure that all units are connected to the mains.
- Done!

Each String controller in the chain needs to have its proper starting address so it knows which commands from the controller it has to decode. In the next section you will learn how to set the DMX addresses.



How to set the DMX addresses:

Setting individual DMX-addresses

1. Connect the String controller to universal DMX controller when universal DMX controller is off.
2. Connect the universal DMX controller & String controller to the mains and switched on.
3. Set all DMX-channels on universal DMX controller to off (value 000).
4. Set the DMX-channels of universal DMX controller, single channel or dual channel ;
 - Single channel: set the DMX-channel, that you want to assign as DMX-start address on your String controller, tot maximum (value 255).
 - Dual channel: set the two DMX-Channels, that you want to assign as DMX-start address on your String controller, tot maximum (value 255).
5. **Switch the "16-section" turntable (A) on the String controller to any section from "1~F" (except "0") and then switch to "0", the LED indicator will glow.**
6. When led indicator of String controller glow (8 seconds), set the DMX-Channels of universal DMX controller from tot maximum (value 255) to off (value 000) again. If dual channel, only one of them from tot maximum (value 255) to off (value 000) will be okay.
7. LED indicator of String controller will flash twice and off.
8. Done! DMX-channels of String controller as shown in the DMX chart (refer to Figure 1).

Figure1 DMX Chart

CH1	
Function	
000 - 010	Blackout
011 - 020	Static program 1
021 - 030	Static program 2
031 - 040	Static program 3
041 - 050	Static program 4
051 - 060	Static program 5
061 - 070	Static program 6
071 - 080	Static program 7
081 - 090	Static program 8
091 - 100	Static program 9
101 - 110	Static program 10
111 - 120	Static program 11
121 - 130	Static program 12
131 - 140	Random playback of static programs 1~4
141 - 150	Random playback of all static programs
151 - 160	Static program 1
161 - 170	Static program 2
171 - 180	Static program 3
181 - 190	Static program 4
191 - 200	Static program 5
201 - 210	Static program 6
211 - 220	Static program 7
221 - 230	Static program 8
231 - 240	Static program 9
241 - 255	Random playback of all sound programs

CH2	
Function	
000 - 255	Static program speed adjustment

An example to make things clear:

We will set the DMX start address of a String controller to 113:

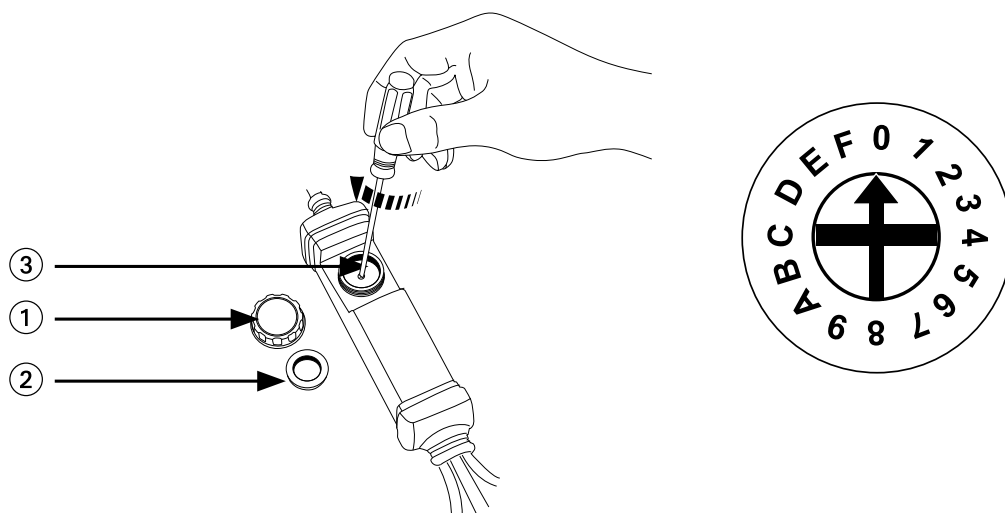
- Connect the String controller to the DMX-controller as described above and make sure all is switched on.
- Set all DMX-channels on the controller to off (value 000).
- Now set DMX-channel 113 to maximum (255).
- Switch the "16-section" turntable (A) on the String controller to other section from 1~F (except "0") then back to "0" again and led indicator glow (8 seconds).
- Now set DMX-channel 113 to off (value 000) again.
- Led indicator of String controller will flash twice and off.
- Done! Your String controller now has DMX address 113!

Tips:

1. If the led indicator only gives one flash and not lighted all the time (8 seconds), it means the following three possibilities:
 - A. The universal DMX controller is not connected to String controller.
 - B. Address value of all channels on the universal DMX controller is 0.
 - C. More than two channels have DMX address value of over 255.
2. Led indicator glowed means String controller accepts the address for setting. Its status is waiting for confirmation. At S6, shifting the value from 255 to 0 means confirming the received address. If not confirmed in 8 seconds, the DMX setting will be suspended automatically

Operating instructions

1. Unscrew the plastic cover (1) and remove the rubber seal (2).
2. Use a small screwdriver to turn the program selector switch (3).
3. In both directions until the desired program is selected.
4. Put the rubber seal (2) in place and fasten the plastic cover (1) to against moisture and dust. The controller is IP44.



Warning! If use sound active program, please don't put the rubber seal (2) back and fasten the plastic cover (1) or controller can't receive the sound active. Under sound active program, the controller is without water-proof.

16-Section switch table

No.	Speed	Function
0	Set up	DMX address preset
1	Mix program	Static program 1
2	Mix program	Static program 2
3	Mix program	Static program 3
4	Mix program	Static program 4
5	Mix program	Static program 5
6	Mix program	Static program 6
7	Mix program	Static program 7
8	Mix program	Static program 8
9	Mix program	Static program 9
A	Mix program	Static program 10
B	Mix program	Static program 11
C	Mix program	Static program 12
D	Slow	Random playback of all static progeams
E	All	Random playback of all static progeams
F	Sound active	Random playback of all static progeams

Product Specifications

Model	String controller
Output signal	SPI & DMX
Output Connector	5 pin JY & 3pin XLR
Input Connector	2pin DC18V power
Connector IP	IP44
Built-in Programs	15
Maximum Load (signal)	200 units of String controller
Maximum Load (power)	With 18V/3A power supply 120 units of CDL
Power	Input DC18V/3A
Dimension (LxW)	193x47mm
Weight	0.56kg

Every information is subject to change without prior notice

WWW.BEGLEC.COM

Copyright © 2011 by BEGLEC NV

't Hofveld 2C ~ B1702 Groot-Bijgaarden ~ Belgium

Reproduction or publication of the content in any manner, without express permission of the publisher, is prohibited.